

L O G I

CORPORATE PROFILE

T R O

KATOLEC CORPORATION

N I C S

**KATOLEC CORPORATION** <http://www.katolec.com/>

Head Office / 2-8-7, Edagawa, Koto-ku, Tokyo 135-0051, Japan

Tel: +81-3-5683-7000 Fax: +81-3-5683-7010

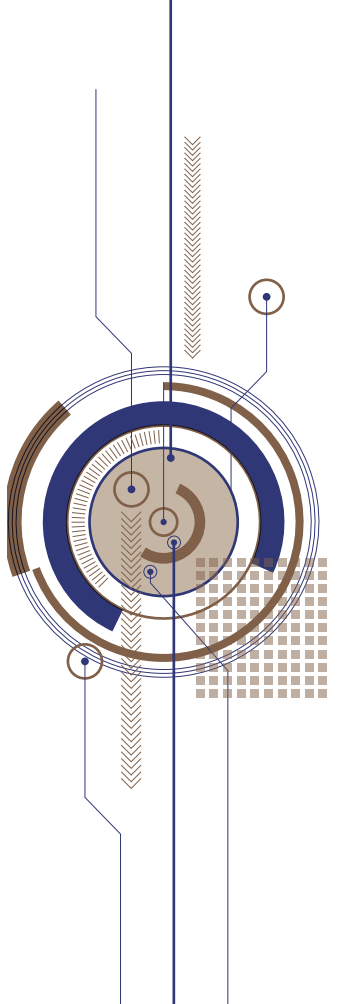
Takamatsu Head Office / 5-5-1, Asahimachi, Takamatsu-shi, Kagawa 760-0065, Japan

Tel: +81-87-822-7000 Fax: +81-87-822-9678





## **Build** for Tomorrow **Deliver** to the Future



SINCE 1877

We've built "today" to deliver an even "better tomorrow".  
The future is overflowing with creativity. We are Katolec.  
We are the creators and the carriers.  
Creations and delivery harmonize beyond the horizon.  
This harmony is our unique value and strength.  
To be better and higher, for the world and for the next stage.  
We continue to support customers from their perspectives  
and endeavor to be the best business partner.

### Company Credo

Katolec will proactively adapt to changes of the times, continue our unwavering commitment towards building a strong partnership with its customers, and always strive to be a company trusted and loved by all.

The best solution,  
integrating creations and delivery  
**Supporting customers' supply chain  
comprehensively**

**Combining "Logistics" and "Electronics"  
to provide new business stages**

"Logistics" and "Electronics" are our core business. We create "Logitronics" integrating these two portfolios. The resulting synergy provides not only more attractive EMS\* in quality, cost, and production speed but also efficient and fast logistics solutions (with high-level management precision and reliability). We continue to support customers' operational development.

\* Electronics Manufacturing Service. We are entrusted with the manufacturing of electronic equipment by customer companies.

LOGISTICS  
ELECTRONICS

**KIPS (Katolec Innovative Production System)**

KIPS, a unique system based on the NPS\* method, facilitates "Rectifications" from manufacturing to logistics. These continuous improvement activities produce new value for customers as "Logitronics".

\* The New Production System (NPS) is a management philosophy to improve business efficiency based on a Toyota Production System (TPS). We implement KIPS where we learn NPS to improve our business operations.



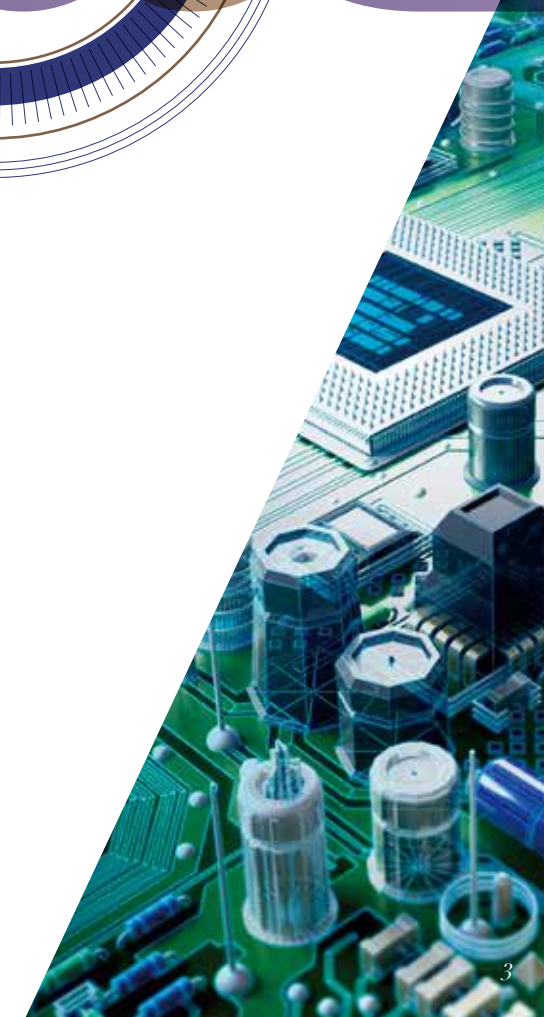
**Logistics**  
[Transportation – Storage – Processing]

**LOGISTICS**  
Providing more accurate  
and quick services through advanced  
improvement and optimization

SOLUTION



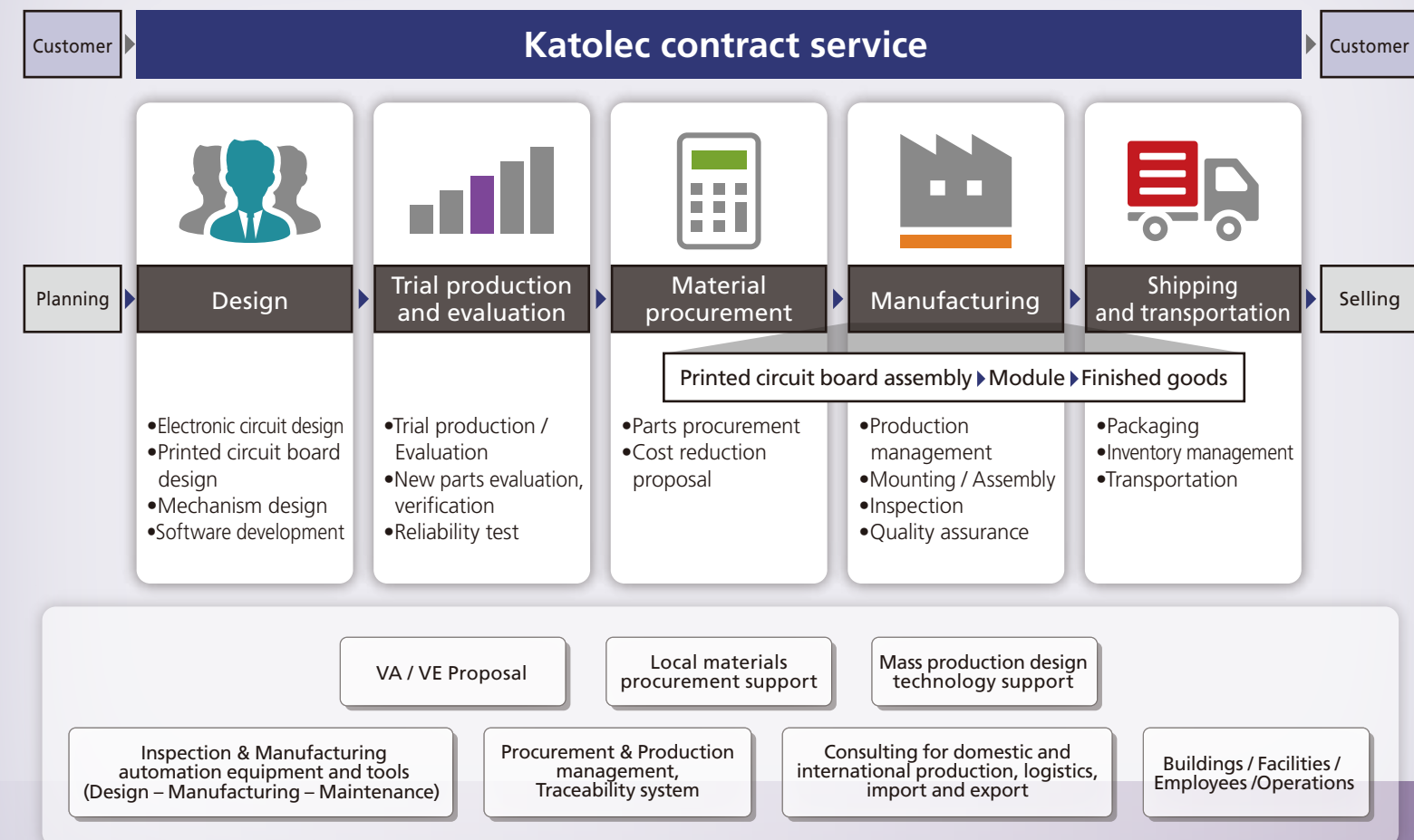
**EMS**  
(Electronic Manufacturing Service)  
[Design – Procurement – Manufacturing]  
**ELECTRONICS**  
Delivering attractive products securely  
to customers nationwide and worldwide



Sponsoring customers' "Creation" with our one-stop service

# ELECTRONICS

Customers can select any combination from the service menu.



EMS (Electronic Manufacturing Service) [Design – Procurement – Manufacturing] Our experience and expertise in "Manufacturing" for more than 35 years since 1980 support customers' global strategies.

## Developing global EMS

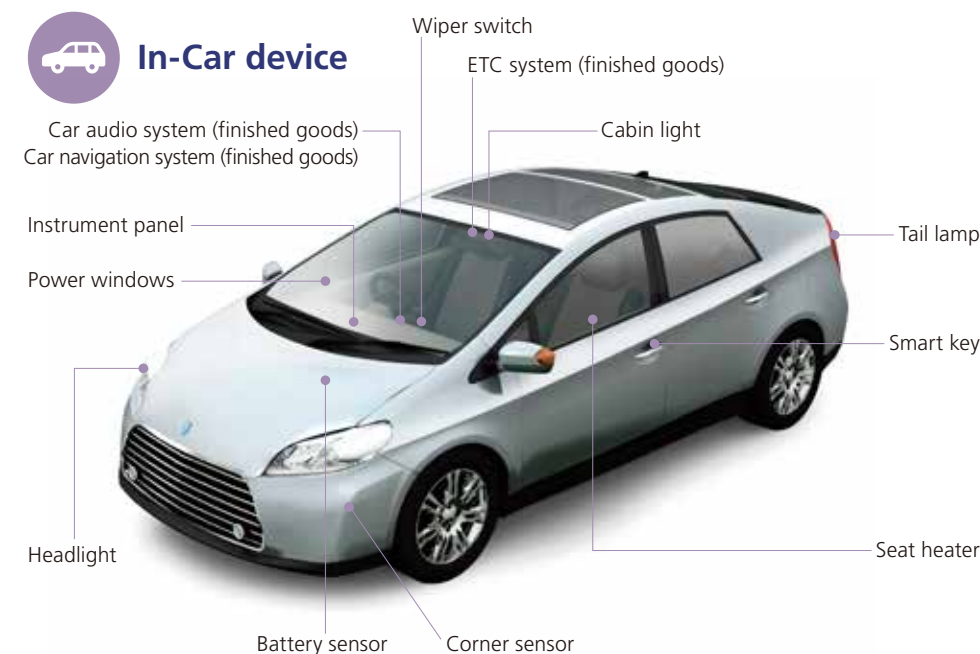
Our contracted manufacturing service provides total support centered on printed circuit board assembly, from electronic equipment design to materials procurement, manufacturing of finished goods, and distribution. Based on our expertise for more than 35 years in "Manufacturing" and improvements in production processing linked up with logistics, we achieve excellent Q (quality), D (delivery), and C (cost effectiveness). Our global development of production and procurement bases reliably supports customers' overseas advancements.

## From consumer electronics to automotive equipment

We provide assembly services in a wide range of fields including consumer electronic equipment for office and home, telecommunications, residential housing, energy-related and other industrial equipment, automobile front panels and tail lamps, smart keys, and other automotive equipment. We are available for services ranging from printed circuit board assembly to manufacturing of module and finished goods.

List of production items (printed circuit board assembly, module goods, finished goods)

Printed circuit boards assembled by Katolec are built into many different types of equipment



**Audiovisual equipment**  
Digital cameras, TV monitors, Audio editing equipment (finished goods), others

**Home electronics**  
Washing machines, Microwave ovens, Sewing machines, Electric bicycles, Iontophoresis machines (finished goods), Skin moisture meters (finished goods), others

**Office Machines**  
Printers (printed circuit board assembly/finished goods), Faxes, Copiers, others

**Housing equipment**  
Air conditioners, Warm water toilet seats, Gas appliances, others

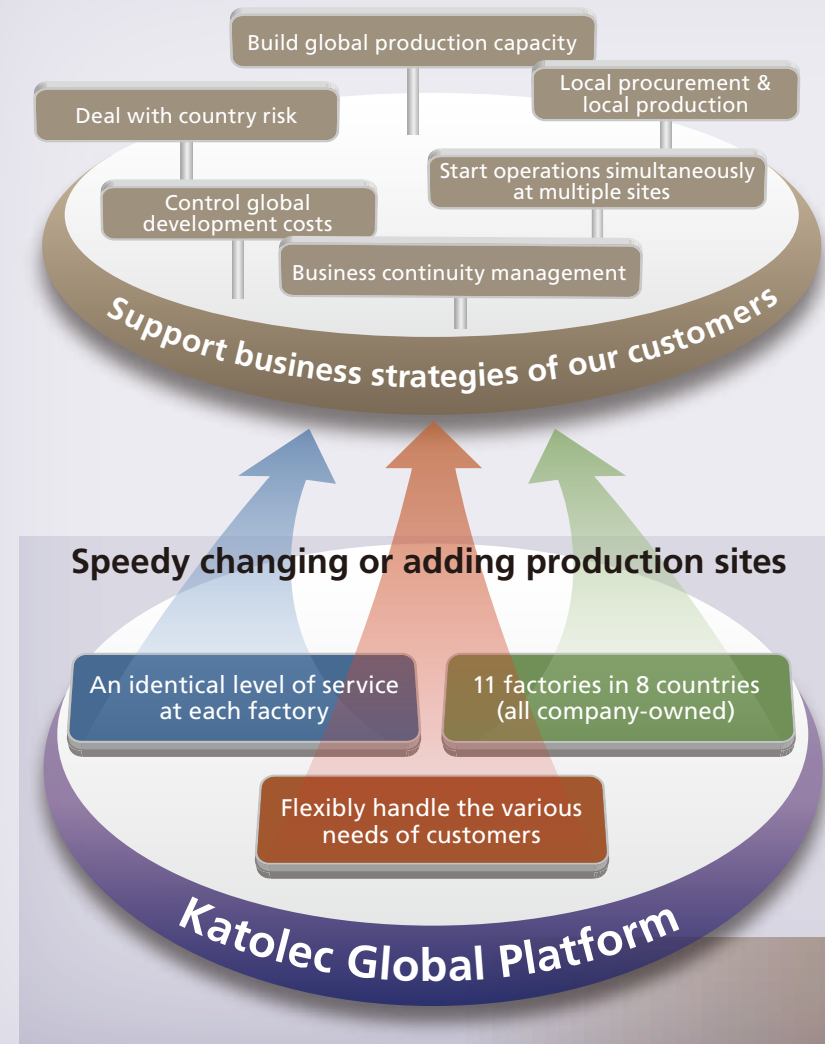
**Industrial equipment**  
Amusement equipment, Vending machines, CT scanners, others



# Global production bases to meet overseas development needs



# ELECTRONICS



EMS (Electronic Manufacturing Service) [Design – Procurement – Manufacturing]

## Optimizing procurement and production on a global platform

We provide a uniform level of high service at domestic and overseas factories in 8 countries and 11 different locations. Corresponding to changes in operation environments, we are able to smoothly handle production transfers with flexible support for country risks. In addition to local procurement functions at each factory, our global procurement bases (in Japan, Hong Kong, and Malaysia) provide back up for optimum procurement.

## High-quality generated by expert engineers and cutting-edge facilities

With more than 35 years of experience in Surface Mount Technology (SMT), i.e. assembling of electronic parts (especially IC-incorporated micro parts) onto printed circuit boards and other electronic substrates, we have many expert engineers with sufficient experience since our initial stage. Additionally, our substantial cutting-edge facilities are highly appreciated by major electrical manufacturers.

[Global production and procurement bases]

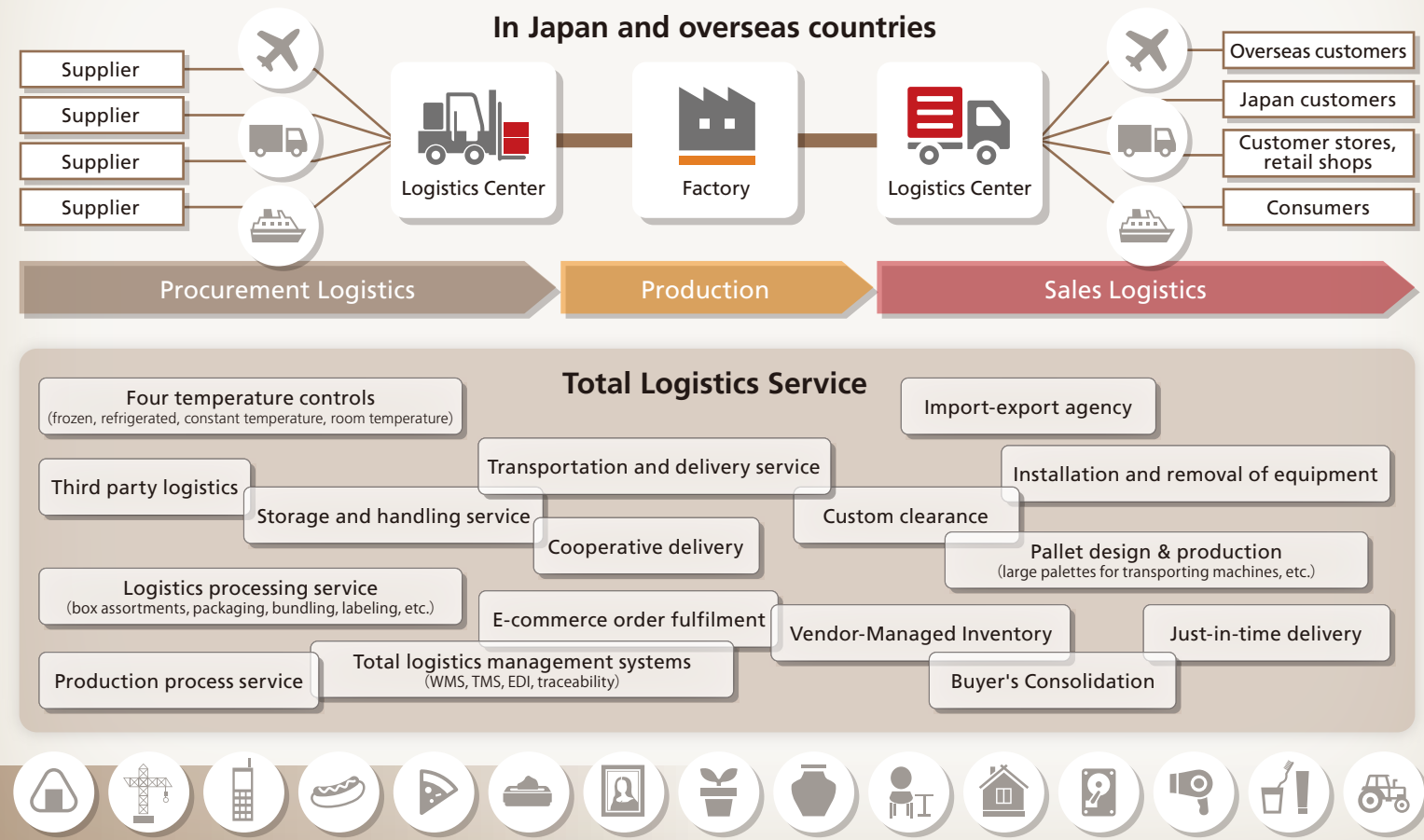


# Smooth delivery based on our manufacturing expertise



**Logistics** [Transportation – Storage – Processing] Offering solutions to optimize customers' manufacturing and sales strategies

Logitronics is effectively utilized in Katolec's total logistics service. One-stop solution, from storage to transportation and distribution.

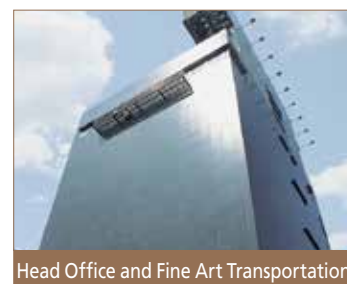


# LOGISTICS

## Optimizing distribution operations nationwide and worldwide to enhance business efficiency

We achieve optimal and smooth logistics through improved and optimized operations based on our management accuracy accumulated in electronics business. We have 25 warehouses, more than 40 Logistics bases, and about 800 vehicles. Enriched with various kinds of expertise in business practices such as transport and storage of chilled and frozen products, safe transport of precision instruments as well as precious works of art, we construct a distribution chain to meet customers' needs.

## [Transportation and distribution bases and warehouse (JAPAN)]



● Head Office and Takamatsu Head Office ● Branch and Office (with warehouse) ● Branch and Office

## Supporting global logistics [Overseas logistics bases]

Our domestic and overseas bases cooperate with each other to provide consistent international distribution services ranging from customers' procurement to import-export, storage, and delivery. For example, our "Buyer's Consolidation" service collects products from multiple suppliers and packages such products together to transport to Japan or other countries. We also provide a wide range of services at overseas bases, such as labeling for distribution processing as a part of manufacturing production, and designing, manufacturing and supplying of steel pallets for large machinery.



# Our logistics service supports your business challenges



Logistics [Transportation – Storage – Processing]

# LOGISTICS

## Solving customers' business challenges with comprehensive logistics solutions [3PL operations]

We provide Third-Party Logistics (3PL) business to contract all aspects of customers' distribution operations. We handle not only efficient and assured transportation and distribution but also distribution processing, warehouse storage, door-to-door delivery, custom clearance, and system development. This operational diversity provides optimal business support for customers.

## Supporting customers' distribution strategies with our unique expertise including joint delivery solutions

We examine all aspects of customer's production and sales activities and design the most efficient distribution route to provide solution strategies for optimizing product flow. For example, our joint delivery solutions to transport products collected from multiple customers can facilitate transportation cost reduction, and have been appreciated by our customers especially in food products and cosmetics business.

## Integrated warehouse and transportation management system [Comprehensive Logistics Management System]

We operate integrated data control system from storage to transportation and distribution to billing, and achieve automatic truck deployment control and precise inventory inquiry based on real-time data management. The system can offer transport tracking information 24-hours a day as well. Additionally, it enables us to eliminate unnecessary tasks of drivers and warehouse operators and improve their work quality.



## Fine Art Transportation

### Reliable performance and special skill [Fine art transportation and storage]

With more than 30 years of experience, we provide integrated fine art transportation services from transportation to arrangement of exhibits. Transportation and storage of fine arts have to meet the special requirements which vary depending on the shape, material, age of production, state of preservation, etc. Our "Certified specialists in packaging and transportation of fine arts\*" select the most suitable method for each fine art, and pack or unpack and fix it in our special truck uniquely developed for fine art transportation.

\* In order to maintain and improve packing and transportation techniques for fine arts, the Japanese Association of Museums performs tests and conducts authorizations.

### Uniquely developed special trucks [Trucks dedicated to fine arts transportation]

We have trucks dedicated to fine art transportation that is equipped with air suspensions and temperature and humidity controller. These trucks have been developed in collaboration with Automotive Precision Services Co., Ltd. a member company of our corporate group, and our Fine Art Transportation Branch. Their equipment continues to evolve.

### A safe and comfortable hotel for precious fine arts [Warehouse dedicated to fine arts]

We have a special warehouse dedicated to fine arts in KATOLEC's Head Office in the Tokyo bay area. The well-equipped environment includes an air-conditioning system which provides optimal temperature and humidity for each individual component of the building, a photo studio space convenient for production of catalogs, and a perfect security system. Since this warehouse is designated as a bonded area, the condition of fine arts can be confirmed within the warehouse without tariffs. There is another warehouse for fine arts in Osaka, where our transportation and set-up staff are stationed.

### One-stop supporting for traveling exhibitions [International transportation network]

Through the International Convention of Exhibition and Fine Art Transporters (ICEFAT) network, we move in fine arts from overseas countries and deliver them to each exhibition site in Japan, while repeating the process cycle, i.e. storage, transportation, arrangement, and removal, and return them back to the overseas countries.



### Affiliated with ICEFAT, the international system of fine art transportation

Established in 1977, this international organization includes 70 companies in 33 different countries around the world and aims to improve the levels of fine arts transportation standards.



\*As of June 2016

# Appreciation for the regions, Respect for the environment

As one of our CSR activities and as repaying to our "Birthplace", we promote conservation of traditional life style and culture in our modern life through the old Japanese style houses and the historic remains, which we collected from various locations in Shikoku Island and reconstructed in Takamatsu city, Shikoku, where our company was founded.



Shikoku Museum of Folk Houses, Shikoku-Mura

## Treasury of multiple award-winning cultural assets

Many of the 31 buildings and approximately 10,000 ancient Japanese folk tools have received the official cultural asset designation. We have received many awards including the Mécénat Award in 1994.

## Gallery of fine arts from around the world

"Shikoku-Mura Gallery" is an exhibition of fine art from artists such as Picasso and Renoir presenting an opportunity to experience a wide range of precious art.



# CULTURE/CSR

To fulfill our responsibility as upstanding corporate citizens in the 3 areas of "Individuals, Society, and Environment", we promote companywide activities to reduce environmental loads.

## Obtained a variety of certifications for "Green Management"

We have obtained environmental management international standard ISO14001 at each base, as well as "Green Management" certifications.



## Promoting traffic safety

We promote safety improvements and compliance with laws. Each base is certified with the "G Mark" by the Japan Trucking Association.



## For reducing CO<sub>2</sub> emissions

We reevaluate each distribution process, introduce low fuel consumption vehicles, acquire energy-efficient driving techniques, and recycle packaging materials.



## Obtained international standard for product quality management

We have obtained product quality management international standard ISO9001 and ISO/TS16949 at each base.

## Environment-friendly "Manufacturing" and distribution

Our factories and warehouses are equipped with solar energy panels. We use recyclable energy and continue to develop environment-friendly bases.



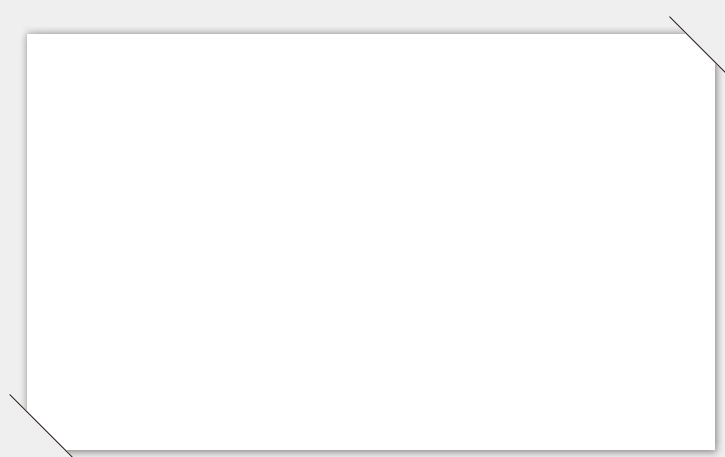
## For reducing environmental load in every process

By "rectifying" business operations in each process, we promote energy efficiency and resource conservation. We respond to global environmental regulations as well.

# Welcome to KATOLEC

As our customers' indispensable business partner, Katolec Corporation continues to provide unrivaled service and support with "electronics" and "logistics". In addition, we uphold our slogan of "Global, Speedy, and Flexible". With these two aspects of business operations side-by-side, we have developed the concept of Logitronics, arising from the synergy of both strengths combined. We strongly believe that we can provide unique and valuable service with this concept of Logitronics. The appeal of Katolec cannot be fully represented in a brochure. The services we can provide are based on our customers' needs. We hope to progress forward together with our customers striving for flexible support and a bright future. This company brochure is simply an introduction to our commitment to success.

President Eisuke Kato





## ■ Company Profile

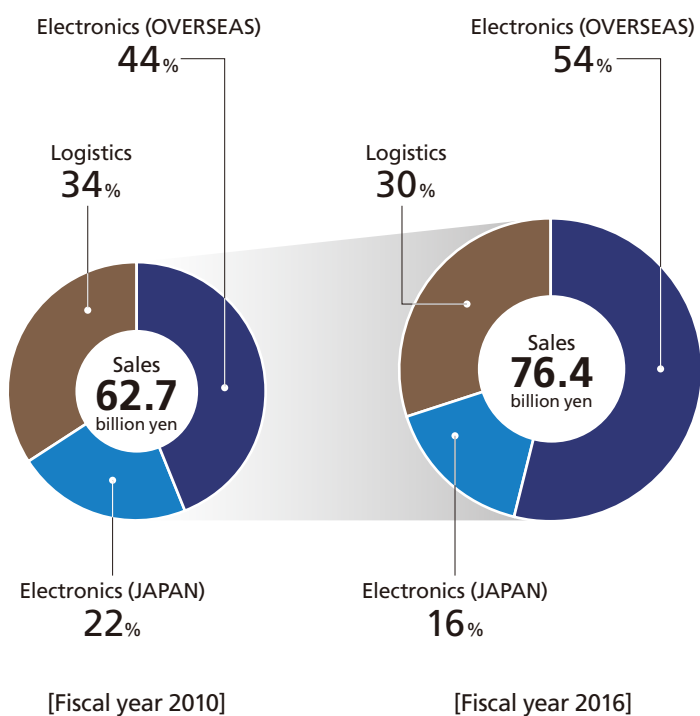
Company name	Katolec Corporation	
Founded	November 2, 1961	
Established	April 1, 1967	
President	Eisuke Kato	
Business Operations	Logistics (transportation, warehousing, door-to-door delivery, logistics processing) Electronics (electric appliance manufacturing and processing)	
Capital	76 million yen	
Employees	Group total	7,090 (as of March 31, 2017)
	Katolec Corporation	1,990
	Domestic subsidiaries	200
	Overseas subsidiaries	4,900
Average age of employees	42.4	
Number of vehicles	800	
Bank	Mizuho Bank, Ltd., The Hyakujushi Bank, Ltd., Sumitomo Mitsui Banking Corporation,	
Subsidiaries	Katolec West Corporation	
	Automotive Precision Services Co., Ltd.	
	COSMO Engineering Co., Ltd.	
	P.T. KATOLEC INDONESIA	
	KATOLEC PHILIPPINES CORPORATION	
	KATOLEC (THAILAND) Co., Ltd.	
	KATOLEC ENGINEERING (THAILAND) Co., Ltd.	
	KATOLEC (HK) Co., Ltd.	
	KATOLEC SUZHOU Co., Ltd.	
	KATOLEC AUTOMOTIVE SYSTEMS (GUANGZHOU) Co., Ltd.	
	KATOLEC VIETNAM CORPORATION	
	KATOLEC MALAYSIA SDN.BHD.	
	KATOLEC DEVELOPMENT INC.	
KATOLEC DE BAJA CALIFORNIA, S.A. DE C.V.		
KATOLEC DE GUANAJUATO, S.A. DE C.V.		
Cultural Program	Shikoku Museum of Folk Houses	

## ■ Main Customers

AJINOMOTO BAKERY CO.,LTD., Amazon Japan G.K., ASAHI LOGI LTD., AWASHIMADO Co.,Ltd., BRIDGESTONE LOGISTICS CO.,LTD., Canon Group, Cleanup Logistics Co.,Ltd., Daio Logistics Co.,Ltd., Denso Group, Ebara Logistics Co.,Ltd., Epson Group, FELISSIMO CORPORATION, FIRST BAKING CO.,LTD., FUJIFILM Group, Furukawa Electric Group, GE Group, Honda Logistics inc., House Logistics Service Corporation, ISETAN MITSUKOSHI BUSINESS SUPPORT, JTEKT CORPORATION, Kagawa Prefecture Federation of Fisheries Cooperative Associations, Kagome Buturyu Service Co.,Ltd., Kintetsu World Express, Inc., KOIZUMI LOGISTICS SERVICE CORP., KOKUBU NISHI-NIHONCORP., KOKUYO LOGITEM Co.,Ltd., Kubota Corporation, Marutomo Co.,LTD., MITSUBISHI CHEMICAL LOGISTICS CORPORATION, Mitsubishi Electric Group, Mizkan Logitech Corporation, MUSEUM OF CONTEMPORARY ART TOKYO, NAGATANIEN CO.,LTD., NH Foods Ltd., NHK(Japan Broadcasting Corporation), Nihon Shokken Holdings Co.,Ltd., Nikon Group, NIPPON DAILY NET, Nisshin Foods Inc., Nittsu NEC Logistics, Ltd., Nittsu Panasonic Logistics Co., Ltd., Okamoto Industries, Inc., Otafuku Sauce Co., Ltd., Otsuka Warehouse Co.,Ltd., Panasonic Group, Pasco Shikishima Corporation, Pioneer Group, S&B Foods Inc., SAKATA SEED CORPORATION, SEZON MUSEUM OF MODERN ART, SHIKOKU COCA-COLA BOTTLING CO.,LTD., SUNTORY LOGISTICS Ltd., TableMark Co.,Ltd., Taiyokobeya Baking Co., Ltd., Takaki Bakery Co., Ltd., The Asahi Shimbun Company, The Mainichi Newspapers Co.,Ltd., The National Art Center, Tokyo, The National Museum of Modern Art, Tokyo, The National Museum of Western Art, Tokyo, The Nisshin Oillio Group, Ltd., THE YOMIURI SHIMBUN Group, TOTAKU INDUSTRIES, INC.,TOTO Group, Unicharm Corporation, YKK AP Inc.

\*Listed alphabetically, without honorifics

## ■ Trend in sales (group total)



## ■ Company History

1877		Started business as a shipping transportation in Takamatsu. (founder: Yataro Kato)
1928		Reorganized to a public company named as Kato Kaiun and relocated the Head Office in Kobe. Started a cargo-passenger ship service between Osaka and Kagawa Prefecture.
1957		Changed the company name to Kato Kisen Co., Ltd. and separated its cargo business as Kato Kaiun Co., Ltd.
1961	Nov.	Started a truck transport service between Takamatsu and Kyoto, which is a root of the current Katolec's business.
1963		Started a door-to-door delivery service for major department stores in Takamatsu Office.
1965	Apr.	Established Fukuju Unyu Co., Ltd in Saijo, Ehime Prefecture. Established Shikoku Precision Automotive Industry Co., which is now named as Automotive Precision Services Co., Ltd. and started auto repair business. Opened an office in Tokyo.
1966	Nov.	Established Kato Soko Unyu Co., Ltd. in Takamatsu, Kagawa Prefecture to realize total logistics services through integrated transportation and warehousing.
1967	Apr.	Separated the land transportation department from Kato Kisen Co., Ltd. to establish Kato Rikuun Co. Ltd., which became a fundamental business of the current Katolec Co.
1976		Established Shikoku Museum of Folk Houses, widely called "Shikoku-Mura", in order to realize social contribution of Katolec Group.
1980		Started an EMS (Electronic Manufacturing Service) business.
1982		Started a Fine Art Transportation service. It's an integrated total service from storage to display of art works. Built in a large computer system into the door-to-door delivery service business and set up a distribution control system based on online networks connected to customers.
	Oct.	Opened Matsuyama plant in Ehime Prefecture, Japan. (EMS plant)
1988		Awarded a prize of Architectural Institute of Japan for the Shikoku Museum of Folk Houses, which are displayed 17 national important cultural properties.
1992	Apr.	Changed the company name to Katolec Corporation. Changed the company name from Fukuju Unyu Co., Ltd. to Katolec West Corporation.
1993	Aug.	Completed new Tokyo Head Office building and set up a fine art warehouse within the building.
	Sept.	Established P.T. KATOLEC INDONESIA as the first overseas plant. (EMS plant)
1994		Awarded a Mecenat Regional prize for the Shikoku Museum of Folk Houses.
1996	June	Established KATOLEC PHILIPPINES CORPORATION. (EMS plant)
	July	Established KATOLEC (THAILAND) Co., Ltd. (EMS plant)
1997	Apr.	Opened Materials Center to reinforce the domestic procurement of components.
	June	Inaugurated Eisuke Kato as the company president.
1999	Mar.	Opened Takamatsu plant in Kagawa Prefecture, Japan. (EMS plant)
2002	Mar.	Established KATOLEC (HK) Co., Ltd. to procure components from China and other countries for overseas markets.
	July	Established EMS Promotion Center (Formerly Materials Center). Reinforced the design department.
	Dec.	Started operations at the Shenzhen plant in China. (EMS plant)
2003	July	Relocated the Head Office to Koto-ku in Tokyo.
	Sept.	Established KATOLEC SUZHOU Co., Ltd. (EMS plant)
2005	Oct.	Established KATOLEC VIETNAM CORPORATION. (EMS plant)
2006	July	Established KATOLEC CZECH s.r.o. (EMS plant)
	Aug.	Established KATOLEC DE BAJA CALIFORNIA, S.A. DE C.V. (EMS plant)
2007	Apr.	Opened new Fine Art Transportation business center in Osaka.
2008	June	Joined NPS (The New Production System) as a Full Member.
2009	Sept.	Opened Chubu Office for logistics business.
2011	Feb.	Established KATOLEC ENGINEERING (THAILAND) Co., Ltd. (logistics company)
	Apr.	Established KATOLEC MALAYSIA SDN.BHD. (EMS plant)
2012	July	Established KATOLEC AUTOMOTIVE SYSTEMS (GUANGZHOU) Co., Ltd. (EMS plant)
2013	Aug.	Opened the logistics division in KATOLEC (HK) Co., Ltd.
2014	Oct.	Established KATOLEC DE GUANAJUATO, S.A. DE C.V. (EMS plant)
2015	Oct.	Opened Fukuoka Office for logistics business.
2016	Mar.	Opened Sendai Office for logistics business.
	Oct.	Acquired all shares of COSMO Engineering.Co., Ltd. (FA engineering and system provider)
2017	Apr.	Established Minda Katolec Electronics Services Private Ltd. in India. (EMS Plant)

## ■ Katolec Corporation

◎Head Office	2-8-7, Edagawa, Koto-ku, Tokyo 135-0051, Japan	Tel: +81-3-5683-7000 Fax: +81-3-5683-7010
◎Takamatsu Head Office	5-5-1, Asahimachi, Takamatsu-shi, Kagawa 760-0065, Japan	Tel: +81-87-822-7000 Fax: +81-87-822-9678

## ■ Katolec Group Logistics Locations (JAPAN)

◎Tohoku	Sendai Office	1-3-25, Ogimachi, Miyagino-ku, Sendai-shi, Miyagi 983-0034	Tel: +81-22-706-4000
	Sendai North Office	68-1, Furukawainaba aza Konosu, Osaki-shi, Miyagi 989-6135	Tel: +81-229-88-6330
◎Hokuriku	Niigata Office	813-3, Nagasaki, Minamiuonuma-shi, Niigata 949-6545	Tel: +81-257-82-9946
	Toyama Office	51-1, Furumido, Kurobe-shi, Toyama 938-0021	Tel: +81-765-52-5555
◎Kanto	Fine Art Transportation	2-8-7, Edagawa, Koto-ku, Tokyo 135-0051	Tel: +81-3-5632-5555
	Syutoken Branch Transportation Dept.	711-1, Wakamatsucho, Wakaba-ku, Chiba-shi, Chiba 264-0021	Tel: +81-43-420-3121
	Delivery Dept.		Tel: +81-43-424-3000
	Warehouse Dept.		Tel: +81-43-424-3011
	Ichikawa Office	2-24, Shiohama, Ichikawa-shi, Chiba 272-0127	Tel: +81-47-701-0070
	Tsukuba Branch	801, Dai, Tsukubamirai-shi, Ibaraki 300-2401	Tel: +81-297-52-5033
	Shimodate Office	2-1-1, Midorimachi, Chikusei-shi, Ibaraki 308-0042	Tel: +81-296-22-5220
	Mitsukaido Office	5687-1, Sakatemachi, Josu-shi, Ibaraki 303-0042	Tel: +81-297-27-4551
	Tsukuba West Office	1176-7, Minaba, Shimotsu-shi, Ibaraki 304-0822	Tel: +81-296-43-9485
	Utsunomiya Branch	5-2, Hiraidekogoyodanchi, Utsunomiya-shi, Tochigi 321-0905	Tel: +81-28-661-6759
	Haga Office	157, Hagadai, Hagamachi, Haga-gun, Tochigi 321-3325	Tel: +81-28-677-2728
	Saitama Office	431, Kamegaya, Tokorozawa-shi, Saitama 359-0014	Tel: +81-4-2945-8210
◎Tokai	Shizuoka Office	903, Nakagawa, Shimada-shi, Shizuoka 427-0104	Tel: +81-547-38-4115
	Chubu Branch Warehouse Dept.	475-2, Fukuokacho, Kuwana-shi, Mie 511-0844	Tel: +81-594-25-9000
	Transportation Dept.		Tel: +81-594-25-9001
◎Kinki	Osaka Branch	1-5-34, Higashibefu, Settsu-shi, Osaka 566-0042	Tel: +81-6-6340-5555
	Fine Art Transportation Osaka Office	1-5-34, Higashibefu, Settsu-shi, Osaka 566-0042	Tel: +81-6-6827-0757
	Seishin Office	7-2-1, Takatsukadai, Nishi-ku, Kobe-shi, Hyogo 651-2271	Tel: +81-78-996-9870
	Ono Office	19, Takumidai, Ono-shi, Hyogo 675-1322	Tel: +81-794-63-8200
◎Chugoku	Okayama Branch	819, Ouchida, Kita-ku, Okayama-shi, Okayama 701-0165	Tel: +81-86-292-5777
	Okayama East Office	1075-1, Kuban, Higashi-ku, Okayamashi, Okayama 704-8161	Tel: +81-86-948-9333
	Tsuyama Office	401, Uetsukikita, Shoocho, Katsuta-gun, Okayama 709-4331	Tel: +81-868-38-7430
	Hiroshima Office	3-2-1, Kusatsuko, Nishi-ku, Hiroshima-shi, Hiroshima 733-0832	Tel: +81-82-270-0950
◎Shikoku	Takamatsu Branch	5-5-1, Asahimachi, Takamatsu-shi, Kagawa 760-0065	Tel: +81-87-851-4334
	Sakaide Branch	4001-83, Yoshida, Utazucho, Ayauta-gun, Kagawa 769-0221	Tel: +81-877-46-2617
	Toyohama Branch	2525, Minourako, Toyohamacho, Kanonji-shi, Kagawa 769-1604	Tel: +81-875-52-5457
	Matsuyama Branch	74-9, Minaminoda, Toon-shi, Ehime 791-0214	Tel: +81-89-955-5333
	Kawauchi Office	2195-1, Minamigata, Toon-shi, Ehime 791-0301	Tel: +81-89-955-8151
	Seiyo Office	328-1, Ino, Uwacho, Seiyo-shi, Ehime 797-0013	Tel: +81-894-62-6661
	West Toyo Office	928-2, Imzaikai, Saijyo-shi, Ehime 799-1362	Tel: +81-898-65-6172
	Toyo Custom Clearance Office	928-2, Imzaikai, Saijyo-shi, Ehime 799-1362	Tel: +81-898-65-4644
	Kochi Office	98-1, Soyama, Nankoku-shi, Kochi 783-0052	Tel: +81-88-862-1577
	Tokushima Branch	30-7, Ejiri aza kawanakasu, Kitajimacho, Itano-gun, Tokushima 771-0205	Tel: +81-88-698-9550
	Ishii Office	838-1, Takagawara aza takagawara, Ishiicho, Myozai-gun, Tokushima 779-3223	Tel: +81-88-674-4051
◎Kysuyu	Fukuoka Office	33-10, Nakabaru, Asakura-shi, Fukuoka 838-0056	Tel: +81-946-23-9228
<hr/>			
	East Japan Car Dispatch Center	431, Kamegaya, Tokorozawa-shi, Saitama 359-0014	Tel: +81-4-2941-3097

## ■ Katolec Group Logistics Locations (OVERSEAS)

### ◎KATOLEC ENGINEERING (THAILAND) Co., Ltd.

Amata Nakorn Industrial Estate, 700/811 Moo 1, Tambol Phanthong, Amphur Phanthong, Chonburi Province, 20160, THAILAND

### ◎KATOLEC(HK) Co., Ltd.

5/F., China Travel Hip Kee Godown 2, 1 Cheong Hang Road, Hunghom, Kowloon, HONG KONG

## ■ Katolec Group Electronics Locations (JAPAN)

Global EMS Center	5-532-28, Asahimachi, Takamatsu-shi, Kagawa 760-0065	Tel: +81-87-826-8231
Takamatsu Plant	5-532-28, Asahimachi, Takamatsu-shi, Kagawa 760-0065	Tel: +81-87-811-0120
Matsuyama Plant	7-15-6, Kukodori, Matsuyama-shi, Ehime 791-0054	Tel: +81-89-973-9890
West Tokushima Plant	139-32, Toyohisa, Matsushigecho, Itano-gun, Tokushima 771-0213	Tel: +81-88-699-3018

## ■ Katolec Group Electronics Locations (OVERSEAS)

### ◎P.T. KATOLEC INDONESIA

Ejip Industrial Park Plot 8F, Cikarang Selatan Bekasi 17550, Jawa Barat, INDONESIA

### ◎KATOLEC PHILIPPINES CORPORATION

103 East Main Avenue, Special Export Processing Zone, Laguna Technopark, Binan, Laguna, PHILIPPINES

### ◎KATOLEC (THAILAND) Co.,Ltd

Saha Rattana Nakorn Industrial Estate, 115/5 Moo 4, Tambol Bangprakroo, Amphur Nakornluang, Ayutthaya, THAILAND

### ◎KATOLEC(HK) Co.,Ltd

5/F.,China Travel Hip Kee Godown 2, 1 Cheong Hang Road, Hunghom, Kowloon, HONG KONG

### ◎KATOLEC SUZHOU Co.,Ltd

Bldg., D, No.58, Yang Dong Road, Suzhou Industrial Park, Suzhou, CHINA

### ◎KATOLEC AUTOMOTIVE SYSTEMS (GUANGZHOU) Co., Ltd.

3 Xingda Road, Huangpu, Guangzhou, Guangdong, CHINA

### ◎KATOLEC VIETNAM CORPORATION

Lot 41A-B, Quang Minh Industrial Zone, Me Linh District, Hanoi, VIETNAM

### ◎KATOLEC MALAYSIA SDN.BHD.

150-C, Jalan Kampung Jawa, Bayan Lepas Free Industrial Zone Phase III, Bayan Lepas, Penang, MALAYSIA

### ◎KATOLEC DEVELOPMENT INC.

6120 Business Center Ct, Suite F200, San Diego,CA 92154, USA

### ◎KATOLEC DE BAJA CALIFORNIA, S.A. DE C.V.

Boulevard Insurgentes #19208-5 Colonia Cerro Colorado, C.P.22223 Tijuana, Baja California, MEXICO

### ◎KATOLEC DE GUANAJUATO, S.A. DE C.V.

Avenida Miguel Hidalgo 100, Parque Industrial Marabis Abasolo, Abasolo, Guanajuato 36987 MEXICO

## ■ Automotive Precision Services Co., Ltd

Head Office and Service Center	4-11-62, Asahimachi, Takamatsu-shi, Kagawa 760-0065	Tel: +81-87-851-0841
Toyo Service Center	1050, Imazaikie, Saijo-shi, Ehime 799-1362	Tel: +81-898-65-4540
Tsukuba Service Center	1176-7, Minaba, Shimotsuma-shi, Ibaraki 304-0822	Tel: +81-296-43-7133

## ■ COSMO Engineering Co., Ltd

Head Office	285, Shinden, Irukadeshinden Komaki, Aichi, Japan	Tel: +81-568-71-6571
Shikoku Museum of Folk Houses	91, Yashimanakamachi, Takamatsu-shi, Kagawa 761-0112	Tel: +81-87-843-3111