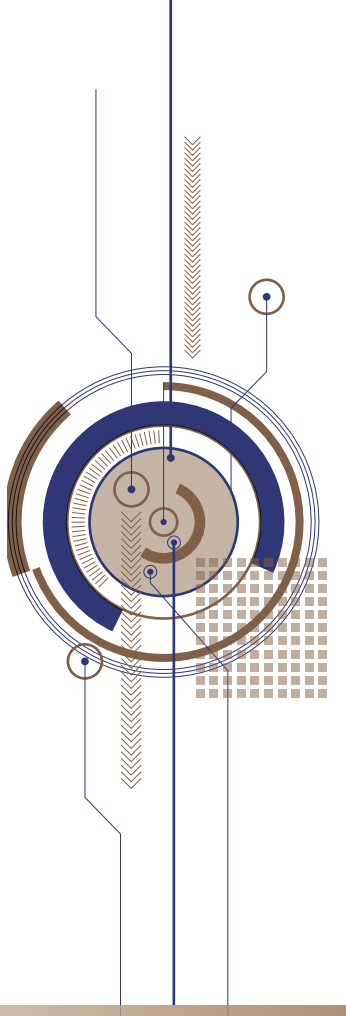


Build for Tomorrow **Deliver** to the Future



SINCE 1877

We've built "today" to deliver an even "better tomorrow".
The future is overflowing with creativity. We are Katolec.
We are the creators and the carriers.
Creations and delivery harmonize beyond the horizon.
This harmony is our unique value and strength.
To be better and higher, for the world and for the next stage.
We continue to support customers from their perspectives
and endeavor to be the best business partner.

Company Credo

Katolec will proactively adapt to changes of the times, continue our unwavering commitment towards building a strong partnership with its customers, and always strive to be a company trusted and loved by all.

The best solution,
integrating creations and delivery
**Supporting customers' supply chain
comprehensively**

**Combining "Logistics" and "Electronics"
to provide new business stages**

"Logistics" and "Electronics" are our core business. We create "Logitronics" integrating these two portfolios. The resulting synergy provides not only more attractive EMS* in quality, cost, and production speed but also efficient and fast logistics solutions (with high-level management precision and reliability). We continue to support customers' operational development.

* Electronics Manufacturing Service. We are entrusted with the manufacturing of electronic equipment by customer companies.

LOGISTICS
ELECTRONICS

KIPS (Katolec Innovative Production System)

KIPS, a unique system based on the NPS* method, facilitates "Rectifications" from manufacturing to logistics. These continuous improvement activities produce new value for customers as "Logitronics".

* The New Production System (NPS) is a management philosophy to improve business efficiency based on a Toyota Production System (TPS). We implement KIPS where we learn NPS to improve our business operations.



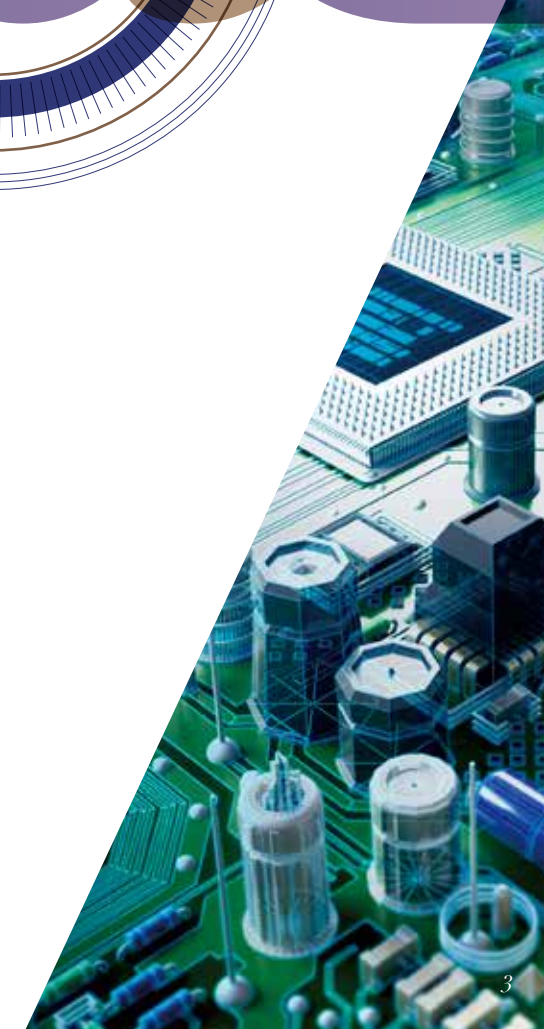
Logistics
[Transportation – Storage – Processing]

LOGISTICS
Providing more accurate
and quick services through advanced
improvement and optimization

SOLUTION



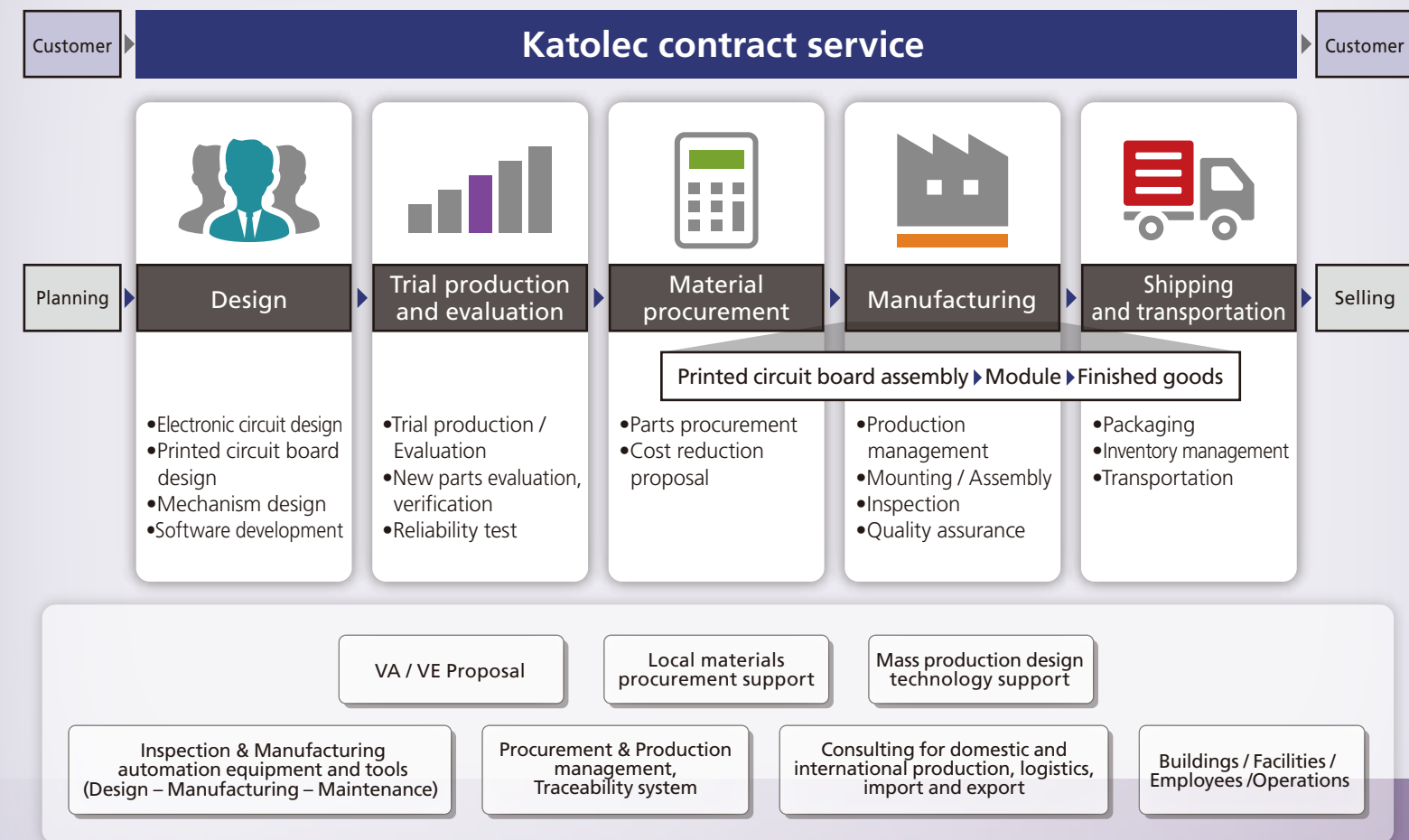
EMS
(Electronic Manufacturing Service)
[Design – Procurement – Manufacturing]
ELECTRONICS
Delivering attractive products securely
to customers nationwide and worldwide



Sponsoring customers' "Creation" with our one-stop service

ELECTRONICS

Customers can select any combination from the service menu.



EMS (Electronic Manufacturing Service) [Design – Procurement – Manufacturing] Our experience and expertise in "Manufacturing" for more than 38 years since 1980 support customers' global strategies.

Developing global EMS

Our contracted manufacturing service provides total support centered on printed circuit board assembly, from electronic equipment design to materials procurement, manufacturing of finished goods, and distribution. Based on our expertise for more than 38 years in "Manufacturing" and improvements in production processing linked up with logistics, we achieve excellent Q (quality), D (delivery), and C (cost effectiveness). Our global development of production and procurement bases reliably supports customers' overseas advancements.

From consumer electronics to automotive equipment

We provide assembly services in a wide range of fields including consumer electronic equipment for office and home, telecommunications, residential housing, energy-related and other industrial equipment, automobile front panels and tail lamps, smart keys, and other automotive equipment. We are available for services ranging from printed circuit board assembly to manufacturing of module and finished goods. In recent years, evaluating high-quality manufacturing, we are entering the aerospace field.

List of production items (printed circuit board assembly, module goods, finished goods)

Printed circuit boards assembled by Katolec are built into many different types of equipment and manufactured products.



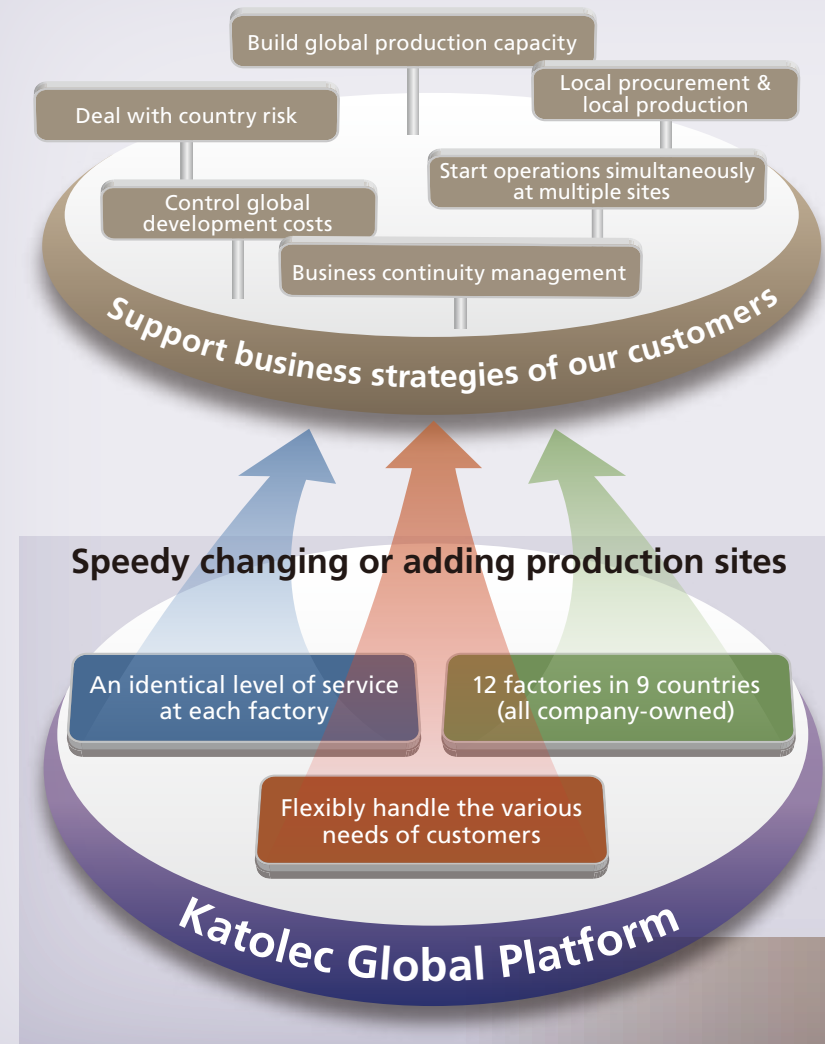
- Audiovisual equipment**
Digital cameras, TV monitors, Audio editing equipment(finished goods), others
- Home electronics**
Washing machines, Microwave ovens, Sewing machines, Electric bicycles, others
- Office Machines**
Printers (printed circuit board assembly/finished goods), Faxes, Copiers, others
- Housing equipment**
Air conditioners, Warm water toilet seats, Gas appliances, others
- Industrial equipment**
Amusement equipment, Vending machines, CT scanners, others
- Medical equipment**
Dialyzers, CT scanners, others
- Aerospace equipment**
Rockets



Global production bases to meet overseas development needs



ELECTRONICS



EMS (Electronic Manufacturing Service) [Design – Procurement – Manufacturing]

Optimizing procurement and production on a global platform

We provide a uniform level of high service at domestic and overseas factories in 9 countries and 12 different locations. Corresponding to changes in operation environments, we are able to smoothly handle production transfers with flexible support for country risks. In addition to local procurement functions at each factory, our global procurement bases (in Japan, Hong Kong, and Malaysia) provide back up for optimum procurement.

High-quality generated by expert engineers and cutting-edge facilities

With more than 38 years of experience in Surface Mount Technology (SMT), i.e. assembling of electronic parts (especially IC-incorporated micro parts) onto printed circuit boards and other electronic substrates, we have many expert engineers with sufficient experience since our initial stage. Additionally, our substantial cutting-edge facilities are highly appreciated by major electrical manufacturers.

[Global production and procurement bases]

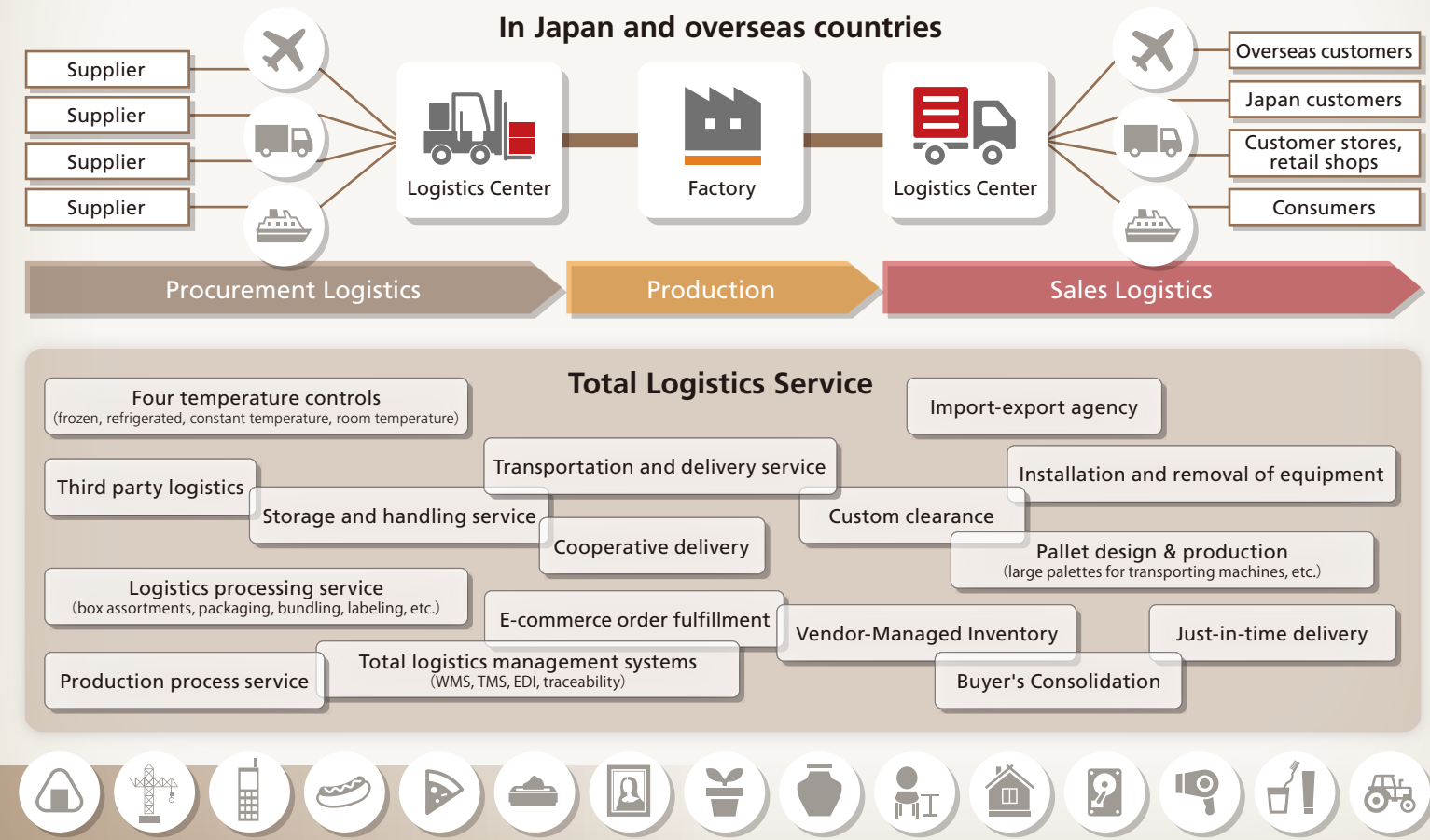


Smooth delivery based on our manufacturing expertise



Logistics [Transportation – Storage – Processing] Offering solutions to optimize customers' manufacturing and sales strategies

Logitronics is effectively utilized in Katolec's total logistics service. One-stop solution, from storage to transportation and distribution.



LOGISTICS

[Transportation and distribution bases and warehouse (JAPAN)]

Optimizing distribution operations nationwide and worldwide to enhance business efficiency

We achieve optimal and smooth logistics through improved and optimized operations based on our management accuracy accumulated in electronics business. We have 25 warehouses, more than 40 Logistics bases, and about 800 vehicles. Enriched with various kinds of expertise in business practices such as transport and storage of chilled and frozen products, safe transport of precision instruments as well as precious works of art, we construct a distribution chain to meet customers' needs.



Manufacturing of large pallets for machinery transportation



Order picking in warehouse transportation



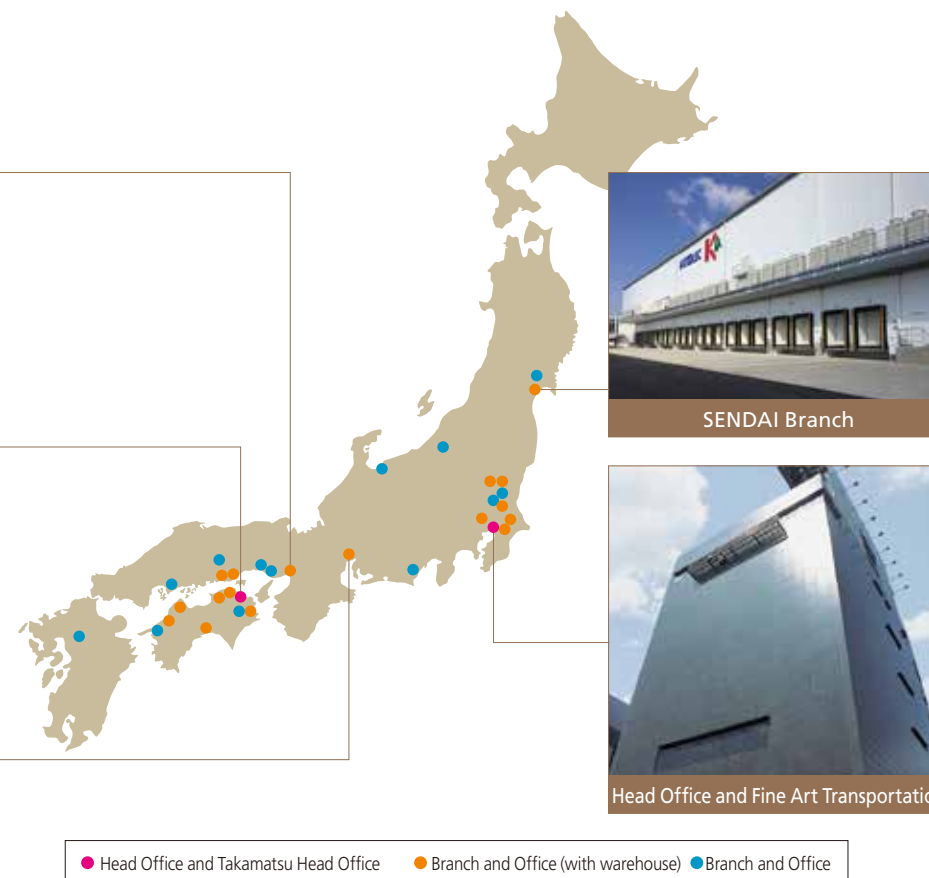
OSAKA Branch



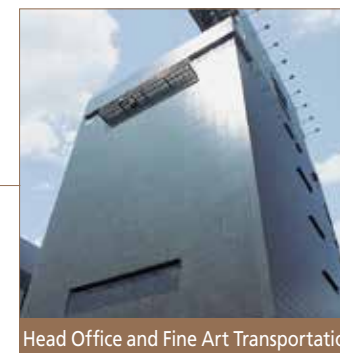
TAKAMATSU Branch



CHUBU Branch



SENDAI Branch



Head Office and Fine Art Transportation

Supporting global logistics [Overseas logistics bases]

Our domestic and overseas bases cooperate with each other to provide consistent international distribution services ranging from customers' procurement to import-export, storage, and delivery. For example, our "Buyer's Consolidation" service collects products from multiple suppliers and packages such products together to transport to Japan or other countries. We also provide a wide range of services at overseas bases, such as labeling for distribution processing as a part of manufacturing production, and designing, manufacturing and supplying of steel pallets for large machinery.



KATOLEC GLOBAL LOGISTICS (THAILAND) CO., LTD.



KATOLEC GLOBAL LOGISTICS (VIETNAM) CO., LTD.



KATOLEC (HONG KONG) Co., LTD.

Our logistics service supports your business challenges



Logistics [Transportation – Storage – Processing]

LOGISTICS

Solving customers' business challenges with comprehensive logistics solutions [3PL operations]

We provide Third-Party Logistics (3PL) business to contract all aspects of customers' distribution operations. We handle not only efficient and assured transportation and distribution but also distribution processing, warehouse storage, door-to-door delivery, custom clearance, and system development. This operational diversity provides optimal business support for customers.

Supporting customers' distribution strategies with our unique expertise including joint delivery solutions

We examine all aspects of customer's production and sales activities and design the most efficient distribution route to provide solution strategies for optimizing product flow. For example, our joint delivery solutions to transport products collected from multiple customers can facilitate transportation cost reduction, and have been appreciated by our customers especially in food products and cosmetics business.

Integrated warehouse and transportation management system [Comprehensive Logistics Management System]

We operate integrated data control system from storage to transportation and distribution to billing, and achieve automatic truck deployment control and precise inventory inquiry based on real-time data management. The system can offer transport tracking information 24-hours a day as well. Additionally, it enables us to eliminate unnecessary tasks of drivers and warehouse operators and improve their work quality.



Fine Art Transportation

Reliable performance and special skill [Fine art transportation and storage]

With more than 30 years of experience, we provide integrated fine art transportation services from transportation to arrangement of exhibits. Transportation and storage of fine arts have to meet the special requirements which vary depending on the shape, material, age of production, state of preservation, etc. Our "Certified specialists in packaging and transportation of fine arts*" select the most suitable method for each fine art, and pack or unpack and fix it in our special truck uniquely developed for fine art transportation.

* In order to maintain and improve packing and transportation techniques for fine arts, the Japanese Association of Museums performs tests and conducts authorizations.

Uniquely developed special trucks [Trucks dedicated to fine arts transportation]

We have trucks dedicated to fine art transportation that is equipped with air suspensions and temperature and humidity controller. These trucks have been developed in collaboration with Automotive Precision Services Co., Ltd. a member company of our corporate group, and our Fine Art Transportation Branch. Their equipment continues to evolve.

A safe and comfortable hotel for precious fine arts [Warehouse dedicated to fine arts]

We have a special warehouse dedicated to fine arts in KATOLEC's Head Office in the Tokyo bay area. The well-equipped environment includes an air-conditioning system which provides optimal temperature and humidity for each individual component of the building, a photo studio space convenient for production of catalogs, and a perfect security system. Since this warehouse is designated as a bonded area, the condition of fine arts can be confirmed within the warehouse without tariffs. There is another warehouse for fine arts in Osaka, where our transportation and set-up staff are stationed.

One-stop supporting for traveling exhibitions [International transportation network]

Through the International Convention of Exhibition and Fine Art Transporters (ICEFAT) network, we move in fine arts from overseas countries and deliver them to each exhibition site in Japan, while repeating the process cycle, i.e. storage, transportation, arrangement, and removal, and return them back to the overseas countries.



Affiliated with ICEFAT, the international system of fine art transportation

Established in 1977, this international organization includes 76 companies in 34 different countries around the world and aims to improve the levels of fine arts transportation standards.



*As of Oct 2018

Appreciation for the regions, Respect for the environment

As one of our CSR activities and as repaying to our "Birthplace", we promote conservation of traditional life style and culture in our modern life through the old Japanese style houses and the historic remains, which we collected from various locations in Shikoku Island and reconstructed in Takamatsu city, Shikoku, where our company was founded.



Shikoku Museum of Folk Houses, Shikoku-Mura



Treasury of multiple award-winning cultural assets

Many of the 31 buildings and approximately 10,000 ancient Japanese folk tools have received the official cultural asset designation. We have received many awards including the Mécénat Award in 1994.

Gallery of fine arts from around the world

"Shikoku-Mura Gallery" is an exhibition of fine art from artists such as Picasso and Renoir presenting an opportunity to experience a wide range of precious art.



CULTURE/CSR

To fulfill our responsibility as upstanding corporate citizens in the 3 areas of "Individuals, Society, and Environment", we promote companywide activities to reduce environmental loads.

Obtained a variety of certifications for "Green Management"

We have obtained environmental management international standard ISO14001 at each base, as well as "Green Management" certifications.



Promoting traffic safety

We promote safety improvements and compliance with laws. Each base is certified with the "G Mark" by the Japan Trucking Association.



For reducing CO₂ emissions

We reevaluate each distribution process, introduce low fuel consumption vehicles, acquire energy-efficient driving techniques, and recycle packaging materials.



Obtained international standard for product quality management

We have obtained product quality management international standard ISO9001, ISO14001 and IATF16949 at each base.

Environment-friendly "Manufacturing" and distribution

Our factories and warehouses are equipped with solar energy panels. We use recyclable energy and continue to develop environment-friendly bases.



For reducing environmental load in every process

By "rectifying" business operations in each process, we promote energy efficiency and resource conservation. We respond to global environmental regulations as well.